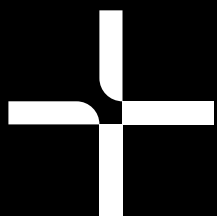


DALLMER

Drainage systems.
Since 1913

*New products
for 2025*



*Together, we
simplify drainage*



CeraWall Individual Neo combines aesthetics and functionality to perfection. Its purist design with discreet wall backsplash integrates almost invisibly into the transition between wall and floor, creating a harmonious, modern bathroom design. Made from high-quality, solid stainless steel, it sets visual accents combined with durability. The variety of dimensions and colours means that CeraWall Individual Neo offers almost infinite scope for creative planning.

Materials and finishes



Stainless steel
matt



Stainless steel
polished



Black*
matt



Red gold*
matt



Brass*
matt

*PVD-coated

Suitable for drain bodies

DallFlex 115/DallFlex/DallFlex Plan/DallFlex Vertical

Lengths

800–1500 mm; 1300–2000 mm in the Duo version

Advantages

- Almost invisible between the wall and floor thanks to the wall backsplash
- Cleaning-optimised channel
- High-quality material: solid stainless steel

Further information on our new products:
dallmer.com/bau



CeraWall Individual Neo

Space for ideas.
Perfectly integrated.

Delivery from
2nd half-year
of '25



CeraFloor Individual Neo

Invisible functionality.
Creative freedom.

Delivery from
2nd half-year
of '25

CeraFloor Individual Neo expands the design possibilities in the modern bathroom and combines innovative technology with elegant design. Perfectly in tune with today's trends, it blends almost invisibly into the shower area and creates a barrier-free, harmonious look. The optimised design also ensures quick and easy installation – well thought out down to the last detail.

Materials and finishes



Stainless steel
matt



Black*
matt

*PVD-coated

Suitable for drain bodies

DallFlex 115/DallFlex/DallFlex Plan/DallFlex Vertical

Lengths

800–1500 mm

Advantages

- For tile and ceramic coverings, as well as natural stone
- Fusion of function and design
- Homogeneous and almost invisible
- Part of the proven and well thought-out DallFlex shower channel family

Further information on our new products:
dallmer.com/bau



Variants



Fire insulation element
DN 50



Fire insulation element
DN 70



Fire insulation element
DN 100

Article number

545008

545039

545046

Authorisation number

General Building Regulation Approval (abZ): Z-19.17-1543

Core drilling dimensions

DN 50 Ø: 120 – 124 mm
DN 70 and DN 100 Ø: 170 – 174 mm

Fire resistance classes

R 30/60/90/120

Advantages

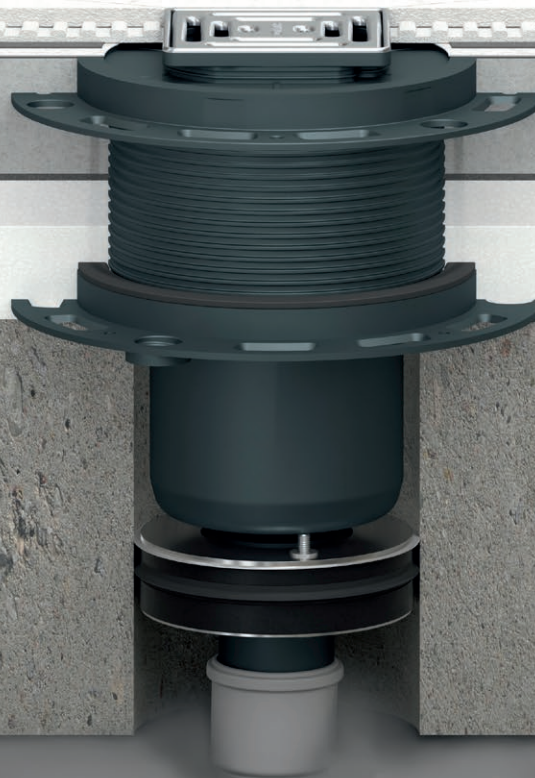
- Fire protection safety in fire resistance classes R 30/60/90/120
- Insert, secure, done! Completely ready for installation
- No mortar, no sealing tape: no additional work steps
- Sealing lips for factory protection against smoke gases
- Small core hole diameter (120 + 4 mm / 170 + 4 mm)

Further information about our product:
dallmer.com/fire-insulation



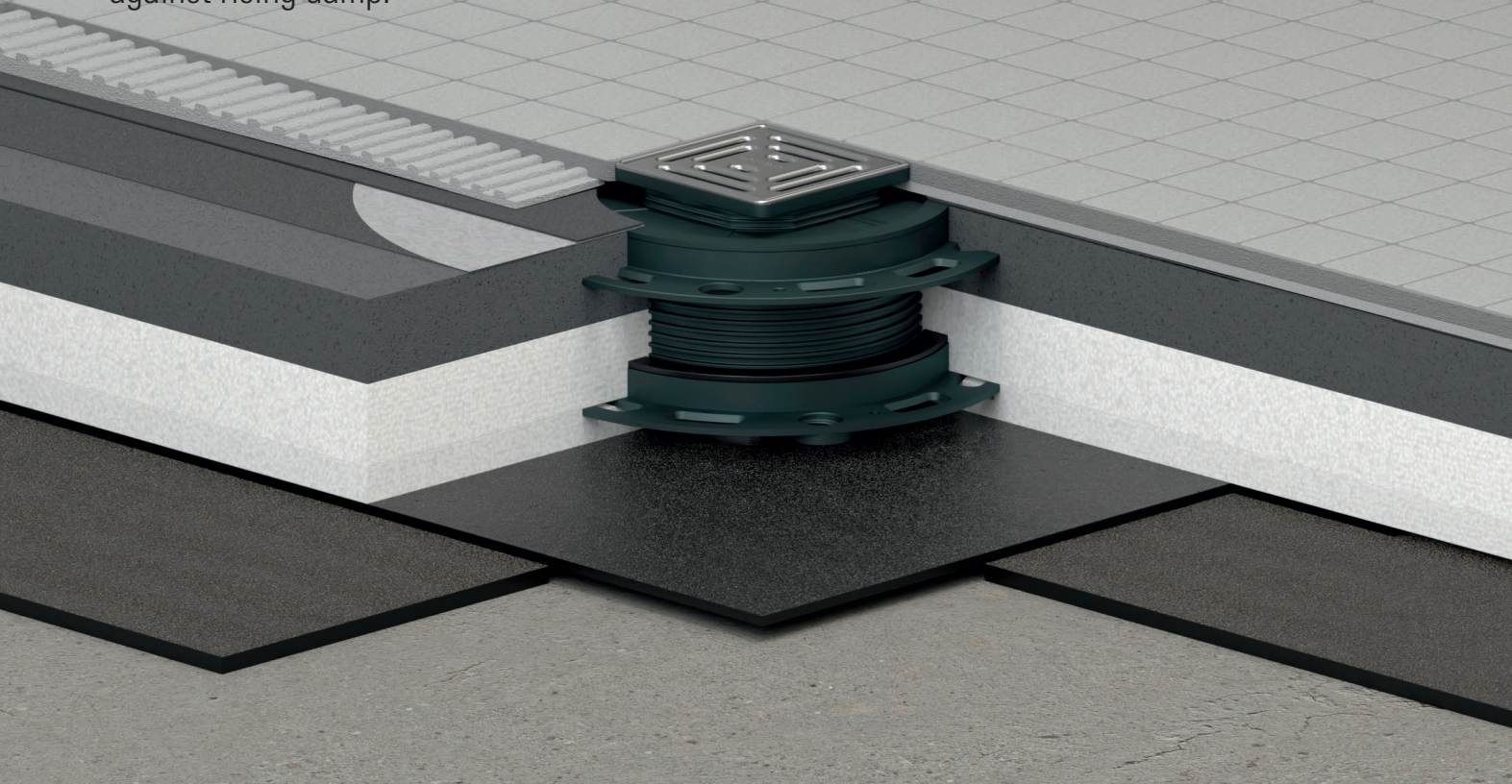
Fire safety

Maximum fire protection.
Minimal effort.



Bituminous sleeve

Flexible protection
against rising damp.



Variants



Bituminous sleeve
DN 50



Bituminous sleeve
DN 100

Article number

517814

517845

Material

Elastomer bitumen connection sleeve, TPE sealing element, polypropylene protective cover/
positioning aid

Dimensions

500 x 500 x 5 mm

Advantages

- Full-surface casting of the floor slab possible, no recesses required
- Easy installation Drain body is inserted directly into the sewer base pipe
- Protective cover protects the seal from heat and dirt
- Precise centring thanks to positioning aid
- TPE lip seal ensures reliable protection
- Clear separation of roofing and plumbing trades
- Ready for installation at the factory

Further information about our product:
dallmer.com/517845/int



Dallmer GmbH + Co. KG
Wiebelsheidestrasse 25
59757 Arnsberg
Germany

T +49 (0)2932 9616-0
E info@dallmer.de
W dallmer.com

NM_EN / 2025_BAU_PDF
WEEE reg. no. DE 98946358

