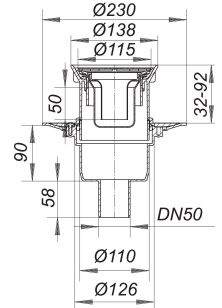


floor drain 30 ERP 12, DN 50, d: 115 mm

Part number: 405326
 GTIN: 4001636405326
 Rebate group: 3



Description:

floor drain 30 ERP 12, DN 50, d: 115 mm
 conforming to DIN EN 1253
 with clamp ring for flexible flooring, 1 – 4 mm
 outlet DN 50 vertical

specification

- height adjustable grating ERP 12
- removable trap insert, 50 mm water seal (conforming to DIN EN 1253)
- temporary blanking plate
- seal CeraDrain S 10

material

polypropylene
 frame ABS, grate 304 stainless steel, d: 115 mm, load class K 3 (300 kg)

The outlet connector can be supplied in ABS to suit British Standard sizes and PE-HD conforming to DIN EN 1519. Please enquire.

Fire protection system 2 (Part No. 515025) applicable.

Flow rates tested to DIN EN 1253:

Nominal diameter	Product standard	Min. flow rate according to norm	Water level according to norm
DN 50	DIN EN 1253	0.80 l/s	20.00 mm

Spare parts:

495075 Two-way seal CeraDrain type S 10

160966 trap insert ORIO built 2004 - May 2010

501264 grate VER, d: 115 mm