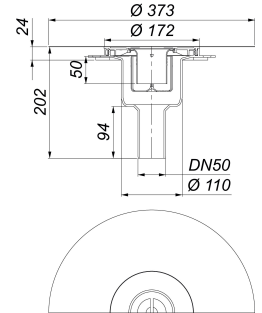
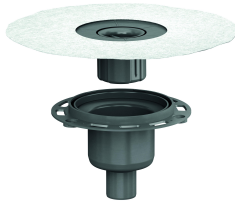


drain body DallDrain vertical, DN 50/DN 100

Part number: 517234
 GTIN: 4001636517234
 Rebate group: 6



Description:

drain body DallDrain vertical, DN 50/DN 100
 conforming to DIN EN 1253
 For installation with gratings DallDrain, raising piece DallDrain. Outlet DN 50 vertical.

Specification

- Integrated screed anchoring
- Flexible, click-in sealing sleeve for secure connection to bonded and sheet waterproofing conforming to DIN 18534
- Fully removable, two-piece trap insert and rodding eye, 50 mm water seal (conforming to DIN EN 1253)
- Temporary blanking plate

Material

Polypropylene drain body and outlet, highly impact-resistant

Fire protection kit DN 50 (Part No. 545008) or fire protection kit 12 (Part No. 515438) applicable.

Flow rates tested to:

Nominal diameter	Product standard	Min. flow rate according to norm	Water level according to norm	Flow rate at water level 10 mm	Flow rate at water level 20 mm	Drainage capacity
DN 50	DIN EN 1253	0.80 l/s	20.00 mm	0.72 l/s	1.30 l/s	1.3 l/s

Spare parts:

517357 trap insert DallDrain